

---

# **Moore Park Piggery Pollution Incident Management Response Plan 2023**

---

REV NO.	DATE	REVISION DETAIL Prepared by: (Include any amendments made to last document)	REVIEWED BY:		AUTHORISED BY:
			WHS Officer	OTHER	
0	Sep 2013	M Graham			
1	Mar 2016	Kevin Tyrrell – Updated to relevant Act, updated contact details, correct numerous spelling and grammar errors, reviewed Appendix 1 – Hazard & Risk Analysis			
2	Mar 2017	Updated contact details for Rivalea contacts			
3	Mar 2018	Updated contact details for Rivalea, Safework NSW and ALTORA AG contacts. Added Ambulance Service. Review plan. Added fuels as potential pollutants.			
4	Mar 2019	Updated contact details and legislation			
5	Mar 2020	Updated contact details			
6	Mar 2021	Updated contact details			
7	Mar 2022	Reviewed and updated			
8	Mar 2023	Updated contact details for Rivalea Added Altora Ag logo	W.Bradley		
<b>File Location:</b> F:\Workplace Health & Safety\Policies\Management Plans\Pollution Incident Management Response Plan Rev 8 2023.docx					

### Introduction

The Protection of the Environment Legislation Amendment Act (POELA) 2011 requires the Environmental Protection Licence holder to prepare and implement a Pollution Incident Response Management Plan.

### Application

This plan has been prepared by Altora Ag Services Pty Ltd (Altora Ag) to ensure that Moore Park Piggery complies with the POELA Act.

### Implementation

Implementation of this plan addresses both systematic and incident procedures to be followed in order to prevent or minimise pollution incidents from occurring, limit their impact and respond appropriately when such incidents occur.

### Administration

Administration for the implementing, maintenance, training of personnel and regular review is the responsibility of the Moore Park Piggery Management Team.

### Communication

All enquiries should be directed to Altora Ag.

### Address: (Head Office)

95 Twynam St, TEMORA NSW 2666

### Locations Coordinates:

34°14'02.45" S

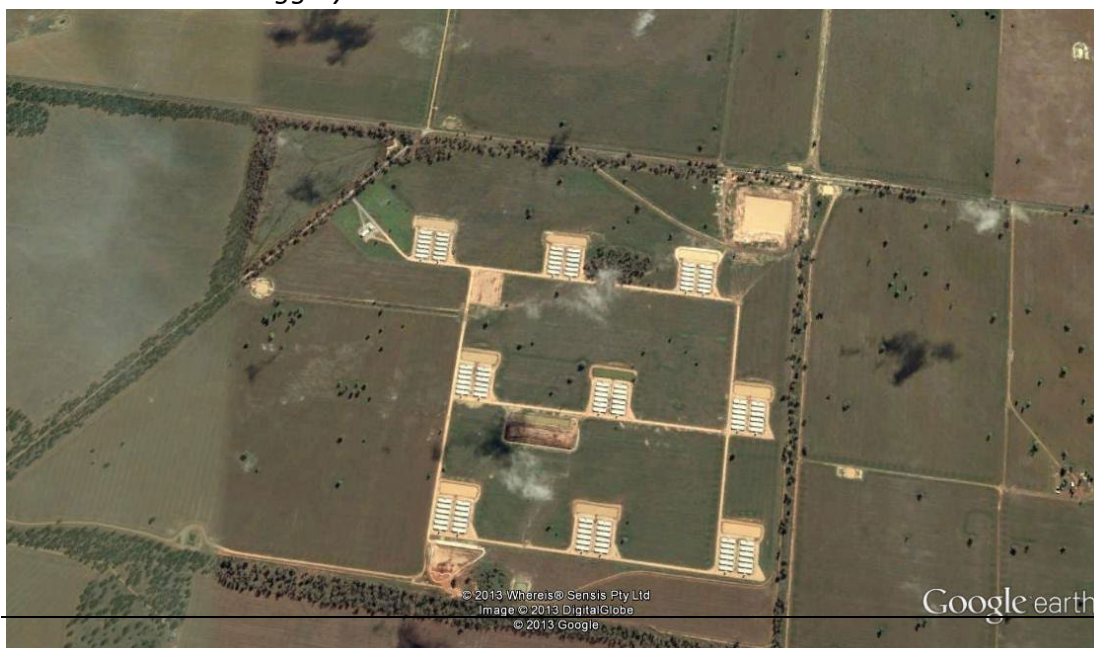
147°22'41.99" E

### EPA Licence Number:

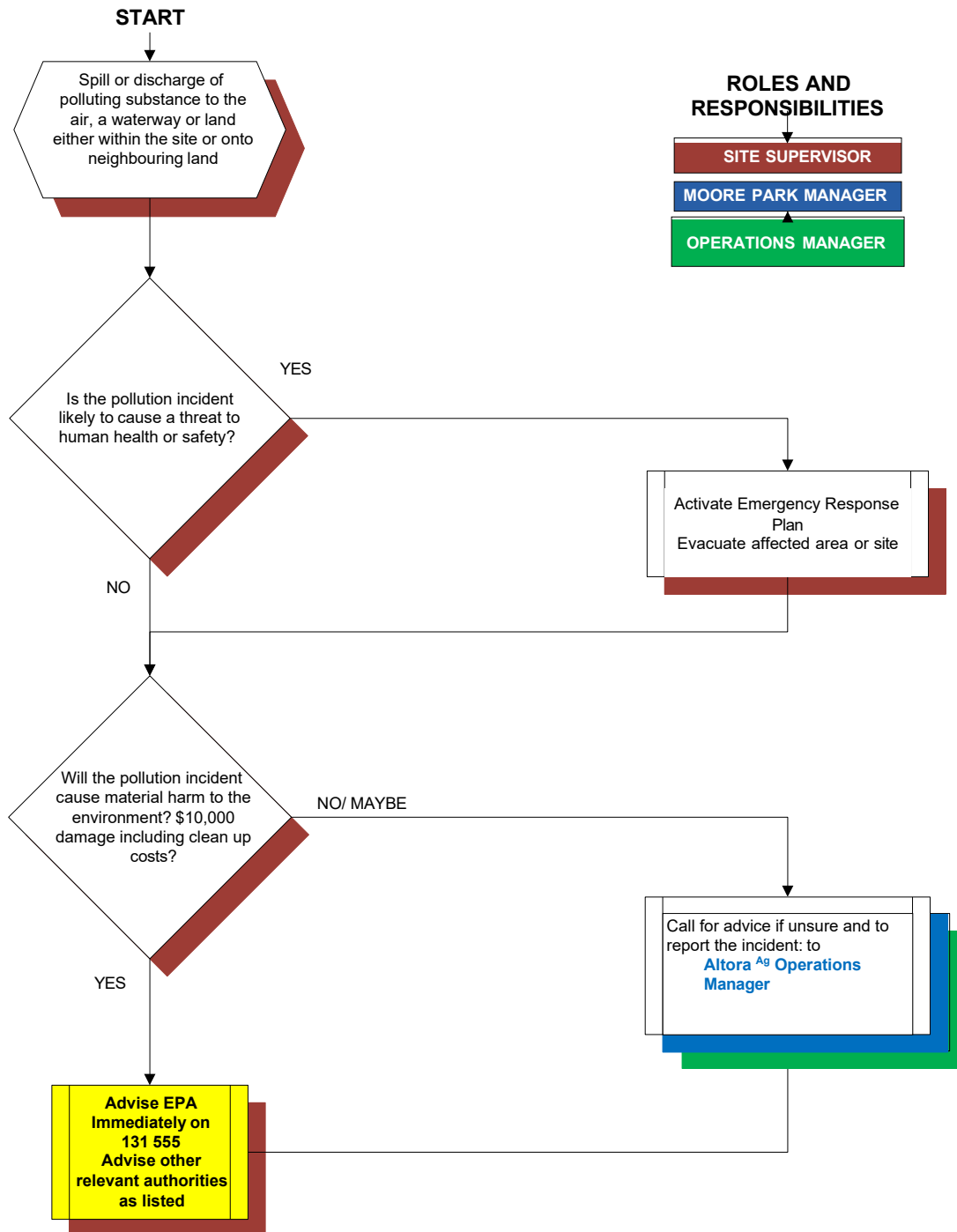
11604

**Site Plan:** Refer also Appendix 3

*Plan 1 Moore Park Piggery*



### Flow chart of incident management



### Key personnel identified in incident management

#### Site Contact Details

Position	Name	Business Hours	Mobile A/H
Site Manager	Keith Harrop	02 6976 2400	0438 787 052
Other relevant contact	Stuart Wiencke	02 6977 1177	0428 787 019
Manager- Riverina Contracting	Matt Tull	02 6033 8340	0439 612 747
Contracting Supervisor	Mat Bolger	02 6033 8541	0407 163 527

#### Rivalea (Australia) Pty Ltd

Position	Name	Business Hours	Mobile A/H
Environmental Manager	Ian Longfield	02 6033 8216	0419 364 103
Environmental Officer	Leandra Watts	02 6033 8044	0466 543 994
Safety Manager	Dilawar Khushi		0467 734 239
Safety Officer	Peter Wilson	02 6033 8397	0481 457 693

#### External Agencies

Position	Name	Business Hours	Mobile A/H
<b>Environment Protection Authority (EPA)</b>	24 Hour hotline to report pollution incidents	131 555	
<b>Fire and Rescue NSW</b>	Emergencies. Temora Fire Brigade 147 DeBoos St Temora	000 02 6978 0554	000
<b>NSW Ministry of Health</b>	(diverts to Albury Base Hospital)- ask for Public Health Officer on call,	02 6080 8900	
<b>SafeWork NSW</b>		13 10 50	
<b>Temora Shire Council</b>	Business Hours	02 6980 1100	
<b>NSW Police</b>	Emergencies. Temora Police 148 DeBoos St Temora	000 02 6977 2044	
<b>Ambulance Service NSW</b>	Emergencies. 119 Hoskins St, Temora	000 13 12 33	

### Description and Likelihood of Hazards

A review of the major environmental risk was undertaken for the site. This risk analysis is shown in Appendix 1. The risks were assessed according to the following criteria:

- Description and impact
- Likelihood
- Contributing circumstances that can increase the risk
- Routine preventative action
- Safety equipment
- Action to be taken in the event of an incident (refer to flow chart)
- Mechanism for providing early warnings to neighbours of a pollution incident of this nature

### Operating Procedures

Safe Work Procedures have been developed in consultation with employees. All employees are to read and complete verification documentation. An Emergency Procedures Manual has been developed and includes a section on Environmental Emergencies.

### Procedures for notifying the NSW Environment Protection Authority

The Operations Manager will be designated as the principle coordinator for managing the response with the EPA. The Operations Manager is defined as the most senior manager in charge of operational control at the time of the pollution incident and has authority to enact this plan.

The Site Manager can seek advice from Rivalea (Australia) Pty Ltd by calling the Contractor manager or Environmental officers.

Advice can also be sought from the relevant combat authority, local government authority or other state agency as appropriate to the incident.

### Procedure for advising occupant/s of neighbouring properties

Advising residents or occupants of neighbouring properties will be accomplished by door knocking at the discretion of the combat authority.

Areas for particular note are listed in the table below:

Receptor	Actual Distance (metres)	Name & Direction
Public road	300	Howards (North)
Public road (<50 vehicles/day)	100	Speirs (West)
Major water course	3000	Barmedman Creek
Major water course	200	Not named
Neighbouring Rural Residence	~2200	“Woodlands”
Neighbouring Rural Residence	~4800	Jamie Cross
Neighbouring Rural Residence	~7200	John Obst

### Incident recording and review

All incidents and hazards are to be reported on the Altora<sup>Ag</sup> electronic WHS Management software. All personnel receive training in the reporting of incidents and hazards at commencement of work, at Induction, and periodically at Safety Meetings.

### **Inventory of potential pollutants**

A manifest including dangerous goods and inventory at the site is attached as Appendix 2.

### **Stormwater Plan**

Storm water is collected by contours and site creeks into collection ponds. These overflow into the site's freshwater dam.

### **Training procedure**

All personnel receive training in Emergency Procedures at induction and periodically thereafter. Relevant personnel will be involved with the review of the Emergency Procedures which occurs biennially or following an emergency.

### **Training topics**

- Location and accessibility of the plan
- Assessing the threat of harm from a pollution incident
- Integrating Emergency Response Plan
- Notifying the EPA of an incident
- Notifying other relevant authorities of the incident

### **Safety Equipment**

The equipment or other devices that are used to minimise the risks to human health or the environment and to contain or control a pollution incident e.g. firefighting gear, safety goggles, overalls, fire extinguishers etc.

### **Training records**

Training records are electronically maintained on the Altora<sup>Ag</sup> File Server.

### **Review of Pollution Incident Management Plan**

This plan is to be reviewed biennially by site management.

The Plan and its implementation will be reviewed after any pollution or emergency event and subsequently updated where any deficiencies are found.

### Appendix 1- Hazard Identification and Risk Analysis

A risk rating (Rank) is then established and given a HIGH, MEDIUM or LOW risk rating. The rating is established using a standard risk-rating matrix as illustrated below.

Risk Rank Likelihood x Consequence	L1 Almost Certain	L2 Likely	L3 Possible	L4 Unlikely	L5 Rare
C1 Catastrophic	1	2	4	7	11
C2 Major	3	5	8	12	16
C3 Moderate	6	9	13	17	20
C4 Minor	10	14	18	21	23
C5 Insignificant	15	19	22	24	25

RISK RATING	
High Risk	1-6
Medium Risk	7-15
Low Risk	16-25

Step 1 Assess the Likelihood			Step 2 Assess the Consequences			
L1	Happens every time we operate	Almost Certain	Common or repeating occurrence	C1	Fatality	Catastrophic
L2	Happens regularly (often)	Likely	Known to have occurred "has happened"	C2	Permanent disability	Major
L3	Has happened (occasionally)	Possible	Could occur or "heard of it happening"	C3	Medical/hospital or lost time	Moderate
L4	Happens irregularly (almost never)	Unlikely	Not likely to occur	C4	First aid or no lost time	Minor
L5	Improbable (never)	Rare	Practically impossible	C5	No injury	Insignificant

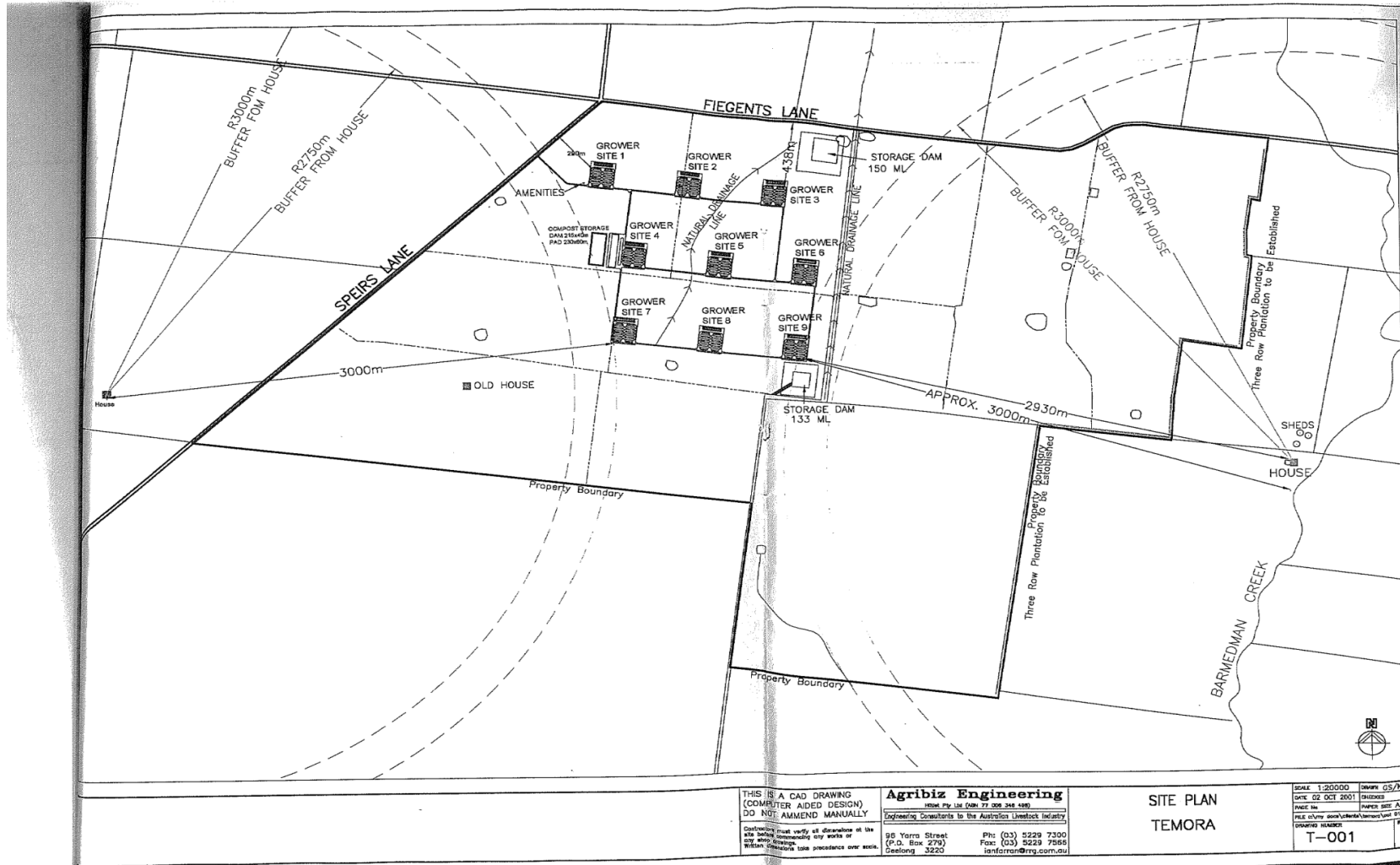


Description and Impact	Risk	What can happen (Event)?	Contributing Circumstances	What can happen (Consequences)?	Operational Controls	Probability	Consequences	Risk Level	Risk Ranking
Truck accident	Fire, oil, fuel or feed spill.	Spill entering the stormwater system	Poor traffic management plan, weather conditions, mechanical failure, driver fatigue	Potential spill into the stormwater system, fire and smoke may impact on residents, odour, cause other accidents.	Sealed road to site, signage, traffic flows, hi viz clothing for onsite staff, speed limits, training.	Unlikely	Major	12	M
Fuel spill	Pollution of surface water, fire. Contaminated soil.	Damage to bowser and fill equipment. Mobile tank movement spill	Vehicle collision with bowser. Operator error. Mobile tank accident.	Potential spill into the stormwater system, potential fire	bunding around tank.	Unlikely	Major	12	M
Chemical spill	Pollution of surface water, contaminated soil, fire,	Chemical seepage into stormwater runoff.	Poor storage, lack of training, vehicle accidents. Cement base/bund not intact/correct size, movement and transport of chemicals, incorrect segregation (acids and alkalis)	Potential spill into stormwater. Fire, explosion, toxic fumes.	Oil and chemical storage room. Concrete floor, mesh and tin walls. All chemicals stored in these area.	Unlikely	Moderate	17	L
Fire	Air and water pollution, toxic fumes from building materials, chemicals	Offsite discharge of chemical residue, smoke and ash,	lack of maintenance of fire-fighting system. Poor maintenance of machinery, Total Fire Ban days, lack of training,	Environmental pollution, human harm, damage to plant and equipment (from fire and water used in the firefighting)	Fire extinguishers and regular inspection of the firefighting system, Hot work permits	Unlikely	Catastrophic	7	M
Effluent offsite discharge	Surface water contamination.	Contaminated water offsite	Excessive rainfall, poor design, stored bedding litter is washed away.	Stored bedding litter is washed away, discharge off site into stormwater	Litter removed as soon as possible, bunding around site.	Possible	Minor	18	L
Odour emissions	Persistent odour event	Can travel to neighbours creating a nuisance.	Unusually stable weather conditions, change in pig's diet	Odour emissions impacting on neighbours and community amenity	Monitoring and inspections, buffer distances, maintenance.	Almost Certain	Minor	10	M

**Appendix 2- Potential Pollutants stored at the site**

<b>Potential Pollutant</b>	<b>Description/usage</b>	<b>Approximate amount</b>	<b>Storage</b>
<b>Spent litter</b>	Can be rice hulls, straw, sawdust etc that is used for bedding material in eco-sheds	>1000 tonnes & <20,000 tonnes	To compost pad until spread on paddocks
<b>Rodenticide</b>	Vermin control	80kg	Sealed plastic bucket in chemical storage area in main office.
<b>Citric acid</b>	Animal health additive	40kg	Sealed 20kg bags wrapped in plastic in medication room in office.
<b>Diesel Fuel</b>	Fuel	17,000L	Bunded above ground storage
<b>Unleaded Fuel</b>	Fuel	1,000L	Bunded above ground storage

Appendix 3- Moore Park Piggery Site Plan



THIS IS A CAD DRAWING (COMPUTER AIDED DESIGN) DO NOT AMEND MANUALLY

**Agribiz Engineering**  
 98 Yarra Street  
 (P.O. Box 279)  
 Geelong 3220

Ph: (03) 5229 7300  
 Fax: (03) 5229 7568  
 lan@agribiz.com.au

SITE PLAN  
 TEMORA

SCALE 1:25000  
 DATE 02 OCT 2001  
 PAGE 14  
 FILE C:\Users\agribiz\Documents\Site Plans\MOORE PARK PIGGERY\MOORE PARK PIGGERY SITE PLAN.dwg  
 DRAWING NUMBER T-001